

ASX
ANNOUNCEMENT

28 July 2021

CORPORATE DIRECTORY

NON EXECUTIVE CHAIRMAN
Terry Streeter

MANAGING DIRECTOR
Shane Sadleir

COMMERCIAL DIRECTOR
Ralph Winter

NON EXECUTIVE DIRECTOR
Adrian Larking

COMPANY SECRETARY
Ralph Winter

ASX: MOH

CORPORATE ADDRESS
L11/216 ST GEORGES TCE
PERTH 6000

T +61 (08) 9481 0389
+61 (08) 9463 6103

E admin@mohoresources.com.au

mohoresources.com.au

HIGHLIGHTS:

- Aircore drilling has commenced at Tyrells and Hodges prospects adjacent to the East Sampson Dam gold deposit (ESD)
- Program of ~8,000m will test gold in soil anomalies extending over a strike length of ~2.5 km

NEXT STEPS:

- Assays from current aircore campaign – September 2021
- Appointment of Mining Engineer to commence Scoping Study to progress mine development at ESD using toll milling facility – August 2021
- RC drill program at ESD to test extensions of mineralisation along strike to north and south and at depth - H2 2021
- Aircore drill program to test multiple gold soil anomalies at Silver Swan North Project, including at Happs and Yalumba prospects southeast of ESD – H1 2022



Figure 1: Aircore drilling in progress at Hodges prospect (M27/488)

“We are excited by what this aircore drilling program may uncover. In particular the auger gold in soil anomalism at Tyrells and Hodges suggests the area could host further gold mineralisation to that already identified at East Sampson Dam. We look forward to updating the market when we have the assay results.”

- Mr. Shane Sadleir, Moho Managing Director

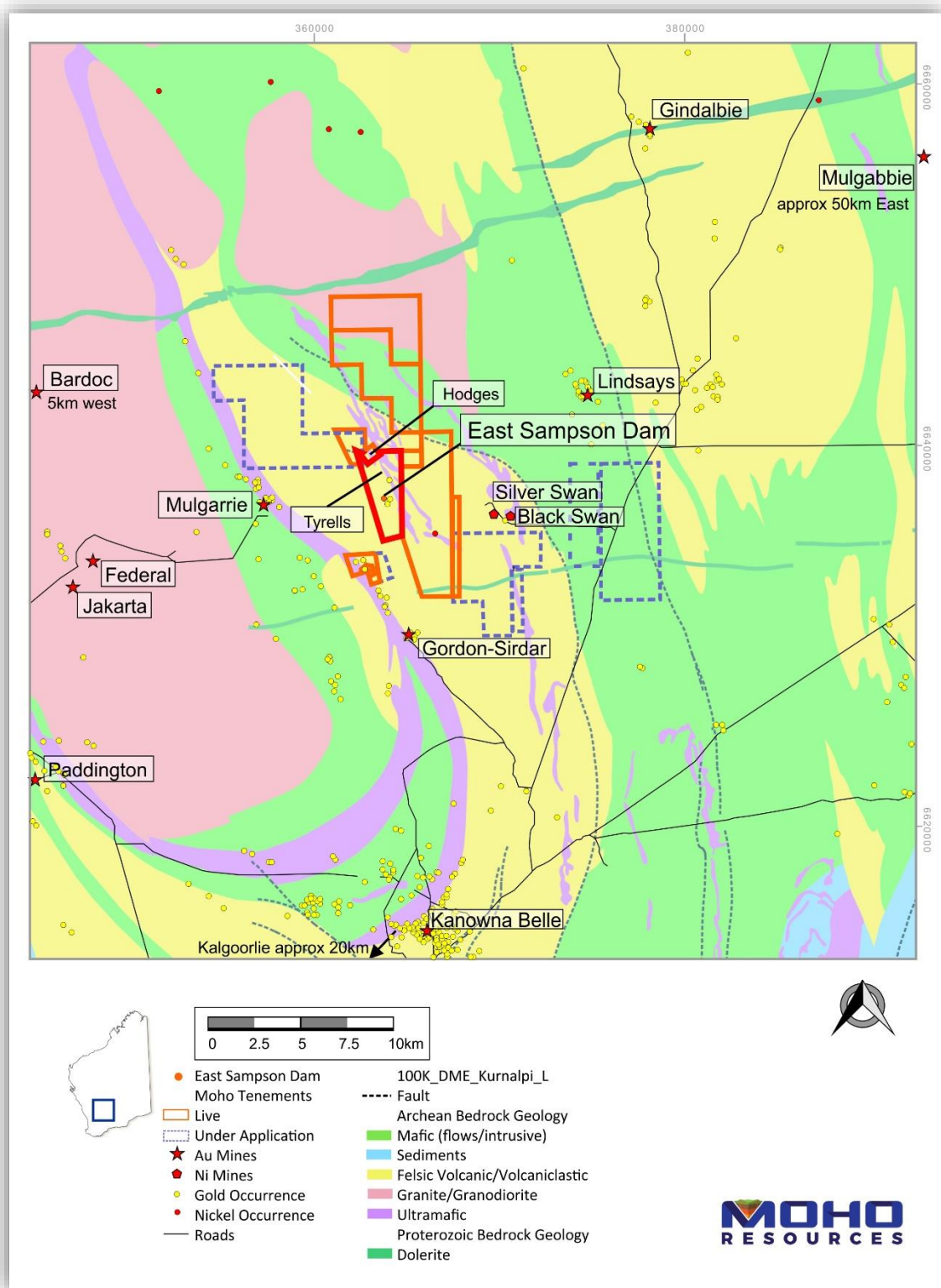


Figure 2: Location of Tyrells, Hodges and East Sampson Dam prospects in relation to Silver Swan North Project tenements and regional geology

Moho Resources Limited (ASX:MOH) (**Moho** or the **Company**) is pleased to advise that it has commenced a program of aircore drilling at the Tyrells and Hodges prospects immediately north of the East Sampson Dam (ESD) gold deposit (Figures 1 & 2) within the Silver Swan North Project, Western Australia.

The drill program is targeting gold anomalism identified by an Auger Soil program as announced to the ASX on 9 September 2020 (“Surface gold anomalies increase prospectivity at Silver Swan North”). Approximately 8,000m of aircore drilling are planned to test a 2.5km long zone of gold anomalism (Figure 3) to the north of ESD.

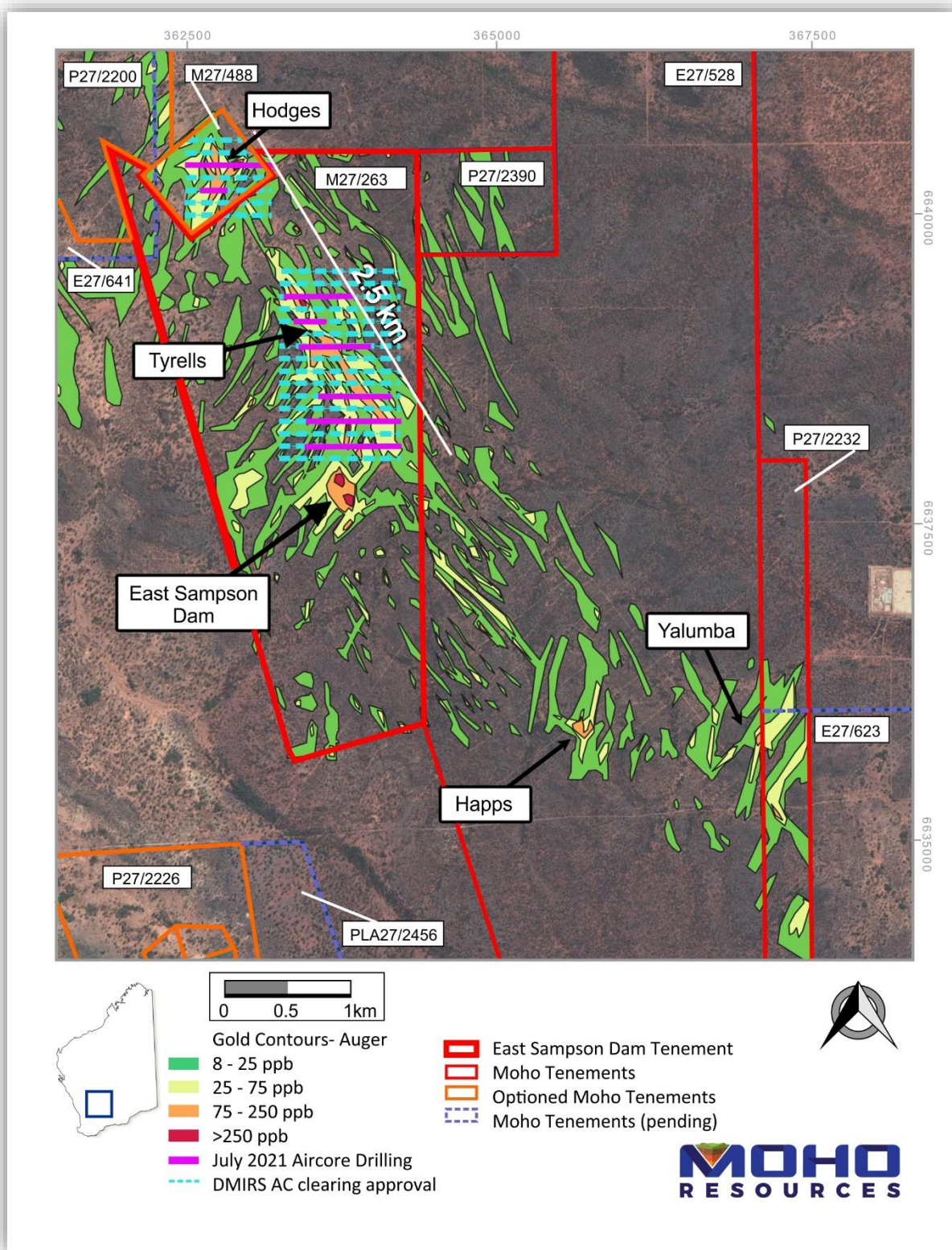


Figure 3: Auger gold in soil anomalies to be targeted by aircore drilling northwest of East Sampson Dam deposit on M27/263 and M27/488

NEXT STEPS:

- Assays from current aircore campaign – September 2021
- Appointment of Mining Engineer to commence Scoping Study to progress mine development at ESD using toll milling facility – August 2021
- RC drill program at ESD to test extensions of mineralisation along strike to north and south and at depth - H2 2021
- Aircore drill program to test multiple gold soil anomalies at Silver Swan North Project, including at Happs and Yalumba prospects southeast of ESD – H1 2022

MOHO'S INTEREST IN SILVER SWAN NORTH TENEMENTS

Moho is the 100% registered owner of granted tenements M27/263, E27/528, E27/626, P27/2232, P27/2390 & E27/613 and applications for E27/623, E27/633, E27/641, P27/2441, & P27/2456 all of which comprise the Silver Swan North Project. The Company has also signed option agreements to acquire M27/488, P27/2200, P27/2216, P27/2217, P27/2218, P27/2226 and P27/2229.

For further information please contact:

Shane Sadleir
Managing Director
T: +61 411 704 498
E: shane@mohoresources.com.au

Ralph Winter
Commercial Director
T: +61 435 336 538
E: ralph@mohoresources.com.au

Media Relations
David Tasker
Chapter One Advisors
T: +61 433 112 936
E: dtasker@chapteroneadvisors.com.au

ABOUT MOHO RESOURCES LTD



Moho's project areas

Moho Resources Ltd is an Australian mining company which listed on the ASX in November 2018. The Company is focused on gold and nickel exploration at Empress Springs, Silver Swan North and Burracoppin.

Moho's Board is chaired by Mr Terry Streeter, a well-known and highly successful West Australian businessman with extensive experience in funding and overseeing exploration and mining companies, including Jubilee Mines NL, Western Areas NL and Midas Resources Ltd.

Moho has a strong and experienced Board lead by geoscientist Shane Sadleir as Managing Director, Commercial Director Ralph Winter and Adrian Larking, lawyer and geologist, as Non-Executive Director.

Highly experienced geologist Lyndal Money (Technical Manager) is supported by leading industry consultant geophysicist Kim Frankcombe (ExploreGeo Pty Ltd) and experienced consultant geochemists Richard Carver (GCXplore Pty Ltd) and Dr Carl Brauhart (CSA Global Pty Ltd). Dr Jon Hronsky (OA) provides high level strategic and technical advice to Moho.